

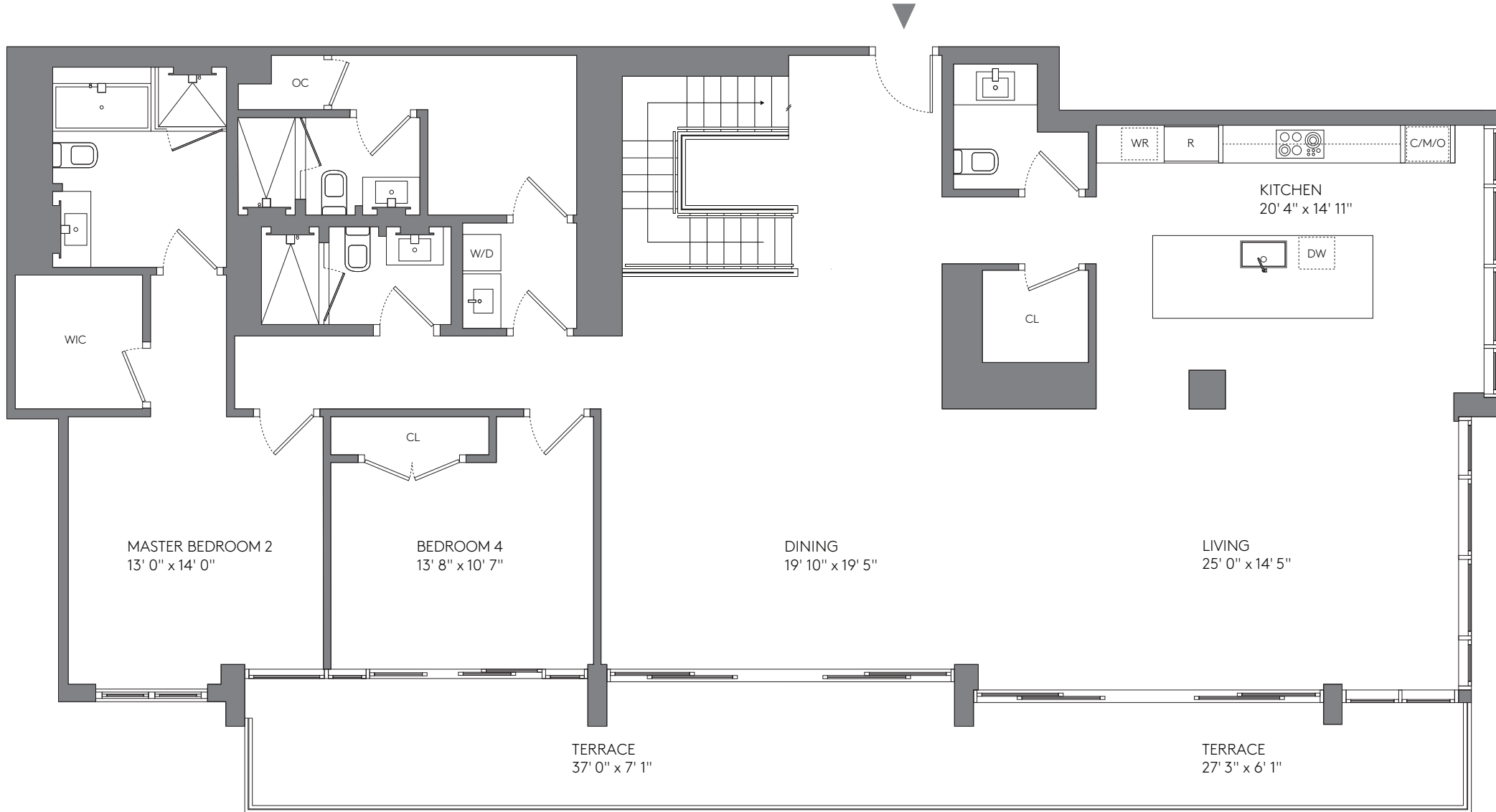
PENTHOUSE
1610

4 BEDROOMS 5½ BATHROOMS

| AREA | SQ FT | SQ M |
|----------|-------|-------|
| INTERIOR | 3,955 | 367.4 |
| TERRACE | 730 | 67.8 |
| TOTAL | 4,685 | 435.2 |



16TH FLOOR



PENTHOUSE
1610

4 BEDROOMS 5½ BATHROOMS

| AREA | SQ FT | SQ M |
|----------|-------|-------|
| INTERIOR | 3,955 | 367.4 |
| TERRACE | 730 | 67.8 |
| TOTAL | 4,685 | 425.2 |



17TH FLOOR

